

TIK Anchor Seals

A - Models without wire

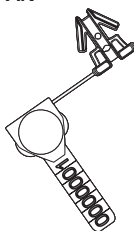
SQUARELOCK



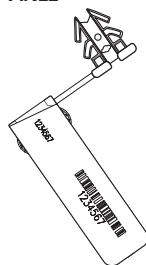
A



AN



ANL2



* Any wire, thread or band with up to 1mm may be used.

WIRE - MONOFILAMENT



WIRE - TRESSED



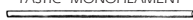
BARBANT - COTTON



BARBANT - PLASTIC



PASTIC - MONOFILAMENT



TAPES - METALLIC



1 mm

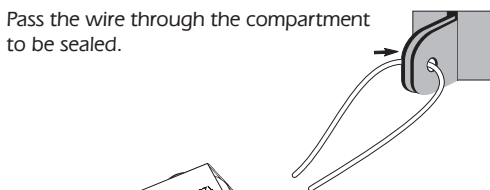


1 mm

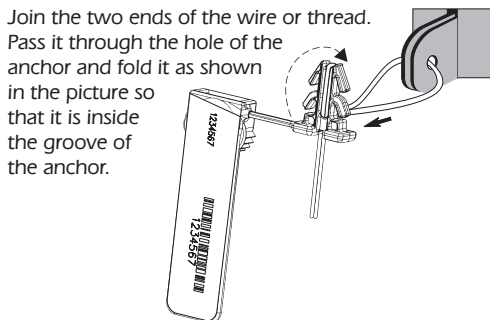


How to seal

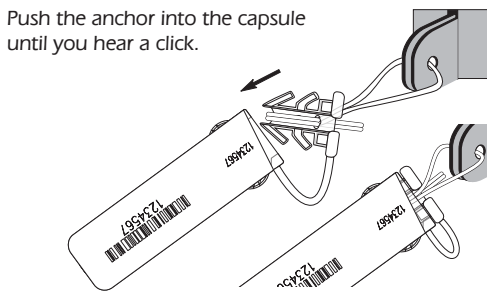
Pass the wire through the compartment to be sealed.



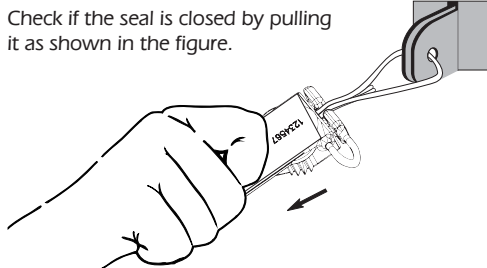
Join the two ends of the wire or thread. Pass it through the hole of the anchor and fold it as shown in the picture so that it is inside the groove of the anchor.



Push the anchor into the capsule until you hear a click.

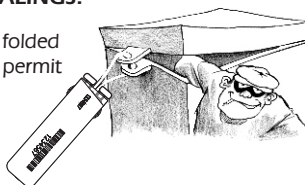


Check if the seal is closed by pulling it as shown in the figure.



AVOID LOOSE SEALINGS!

The wire should be folded in such a way as to permit very tight sealing.



How to remove

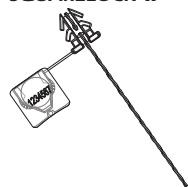
Cut the wire or thread away from the seal.



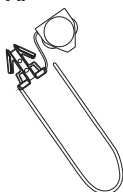
TIK Anchor Seals

B - Models with wire or thread

SQUARELOCK W



AF



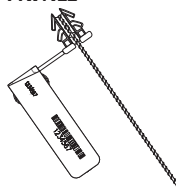
AW



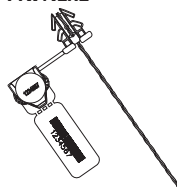
AWN



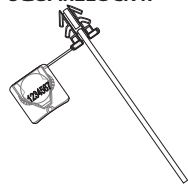
AWN/L2



AWN/LR2



SQUARELOCK R



AR



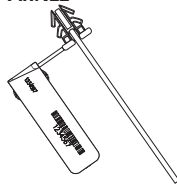
ARN



AFN

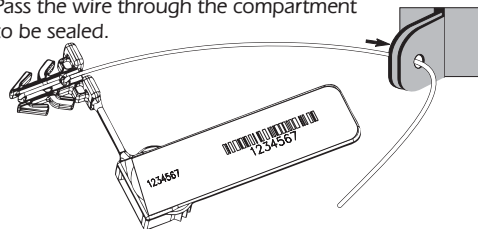


ARN/L2

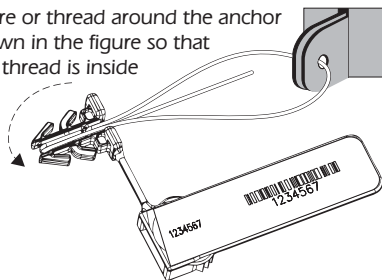


How to seal

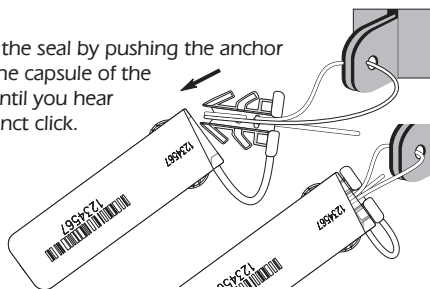
Pass the wire through the compartment to be sealed.



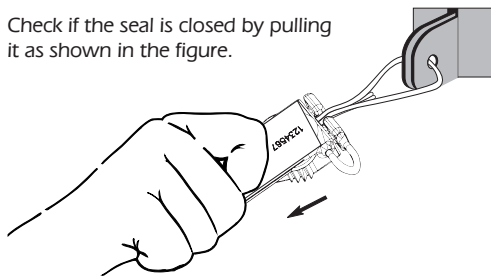
Pass the wire or thread around the anchor and as shown in the figure so that the wire or thread is inside the central groove of the anchor.



Close the seal by pushing the anchor into the capsule of the seal until you hear a distinct click.

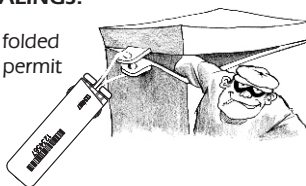


Check if the seal is closed by pulling it as shown in the figure.



AVOID LOOSE SEALINGS!

The wire should be folded in such a way as to permit very tight sealing.



How to remove

Cut the wire or thread away from the seal.

