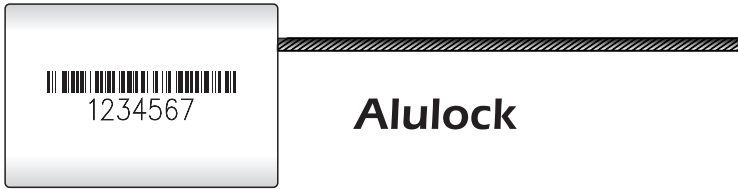


Cable seals



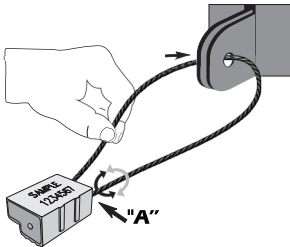
Safelock M



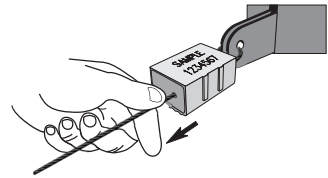
Alulock

How to seal

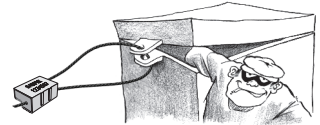
- 01 Pass the cable through the compartment you plan to seal and insert it into the capsule A to activate the locking mechanism.



- 02 Pull the cable tight to the tightest aperture possible.

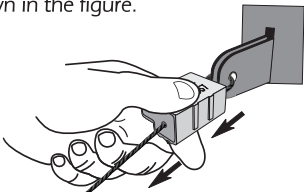


ATTENTION!



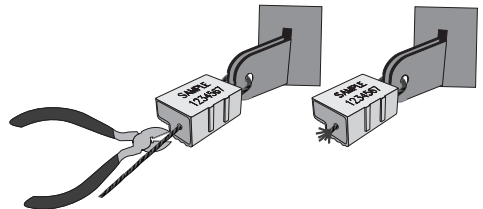
AVOID LOOSE SEALINGS!

- 03 Confirm the seal is locked by gently pulling as shown in the figure.



If the seal is not locked, replace it.

- 04 Cut the excess cable right next to the capsule. The cable will fray, making it impossible to be re-inserted.



How to remove

Use a pair of pliers to cut the seal open.

