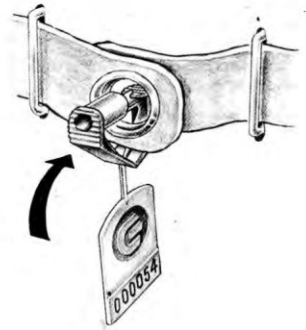
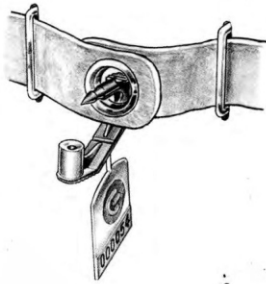


### How to close



You can close the Pratik seal with only one hand.

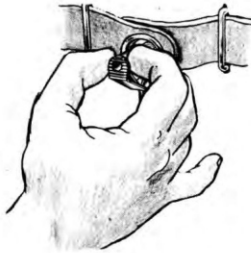


Squeeze firmly until you hear a click. Only then is the seal actually closed.



to seal

Check if numbers are perfectly legible.



When checking seal closure, pull firmly, as if to open. This procedure will stop any defective seal.



Print seal numbering on document, with no corrections or scribbles that may cover up false seal replacement.

### How to open

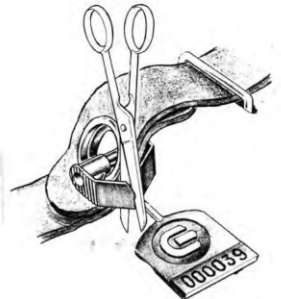
#### when received



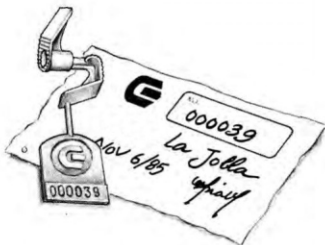
Sealed shipment opening is too much responsibility to one person only. This responsibility must always be shared. Thus, in case of irregularity, there will be at least one witness to state the fact at the time of occurrence.



Pull firmly, as if to open, to verify if the seal had been closed.



To remove the seal, cut at the thinnest bend, where it is narrow.



Verify if seal number is in conformity with those on documents, which must not be touched or amended.

Keep the seal until checking process is over. Loss of the seal will make controllers responsible in case of irregularity.

In case of irregularity call for inspection. If there are no irregularities, the used seal must be destroyed.

