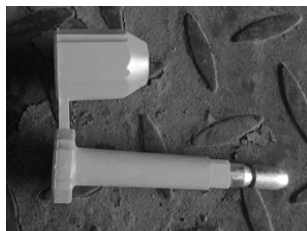


How-To-Use SAFELOCK Super Bolt Seals

TO CLOSE:



1 - Before you use the Bolt Seal, make sure the bolt and the locking chamber are fully connected by a plastic bridge.



2 - Separate the bolt from the locking chamber and insert the Bolt through the container fitting and lock the chamber by firmly pressing it into the bolt.

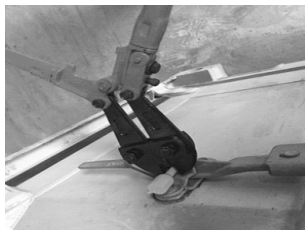


3 - Once Bolt is fully inserted, test it by pulling it apart to prevent false closing.

TO OPEN:



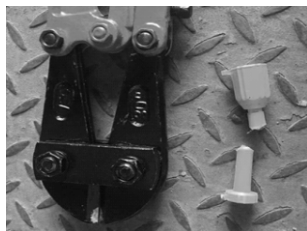
1 - Before removing the seal, check the seal's serial number and look for possible tampering signs such as bruises and chinks on the seal or on the surrounding.



2 - Position your 30" cutter on the seal's bolt, right next to the locking chamber and shut the cutter close with continuous force.



3 - When removing the bolt seal, use protective gear (i.e. eyewear, jacket, gloves) as bolt seal fragments may fly around when cut.



4 - Keep the seal until verification is finished. The loss of the seal shall make the person with its custody accountable in case of irregularities. If there is suspicion of irregularities, inform the supervisor.



Used seals and must de collected for verification and adequate destruction. They should not be thrown away in the trash because they contain information which might be useful for fraud.

SAFELOCK is not accountable for the incorrect use of this product.